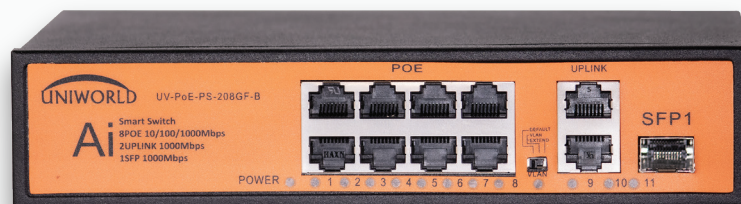


8GE+2GE+1SFP Ai SMART POE SWITCH

UV-POE-PS-208GF-B 1SFP

- 8 Port Giga Ethernet Poe Switch.
- Switching Capacity : 38 Gbps.
- POE Up to 100m.
- 2 Giga Uplink & 1 SPF Ports Giga.
- Power Input: 100~240V AC 50/60 Hz.
- PoE Budget DC 52V 400W.
- Plug & Play.



Model	8 GE+2GE+1 SFP Ai SMART POE SWITCH
Transmission Rate	10/100/1000Mbps
Communication Mode	Full-Duplex & Half-Duplex
Certification	CE RoHS
Switch Capacity	38Gbp
PSE Type	End-span
Color	Grey/Black
Transfer Mode	Storage Transfer
Signal Pin	1,2,3,6
Distance	Up to 100m
Dimension	310*190*45mm
PoE Budget	52V 400W
Port	8 POE Port at 10/100/1000 each without missing data
Additional Port	2 Ethernet Uplink at 10/100/1000 Mbps each.& 1 SPF Port
Extension	Extend networking port can extend signal and distance up to 250m.
Full Duplex	Support IEEE 802.3x full-duplex and Backpressure half-duplex.
Port Information	Every port supports MDI/MDI auto flip and self-negotiation.
Network Cable	Support CAT-5e or better access point (AP) and data transmission for networking camera.
Power Input	Power Input:- 100-240V AC 50/60Hz
Supported Resolution	Simple set up, Smart management, Anti-thunder design up to 6K

